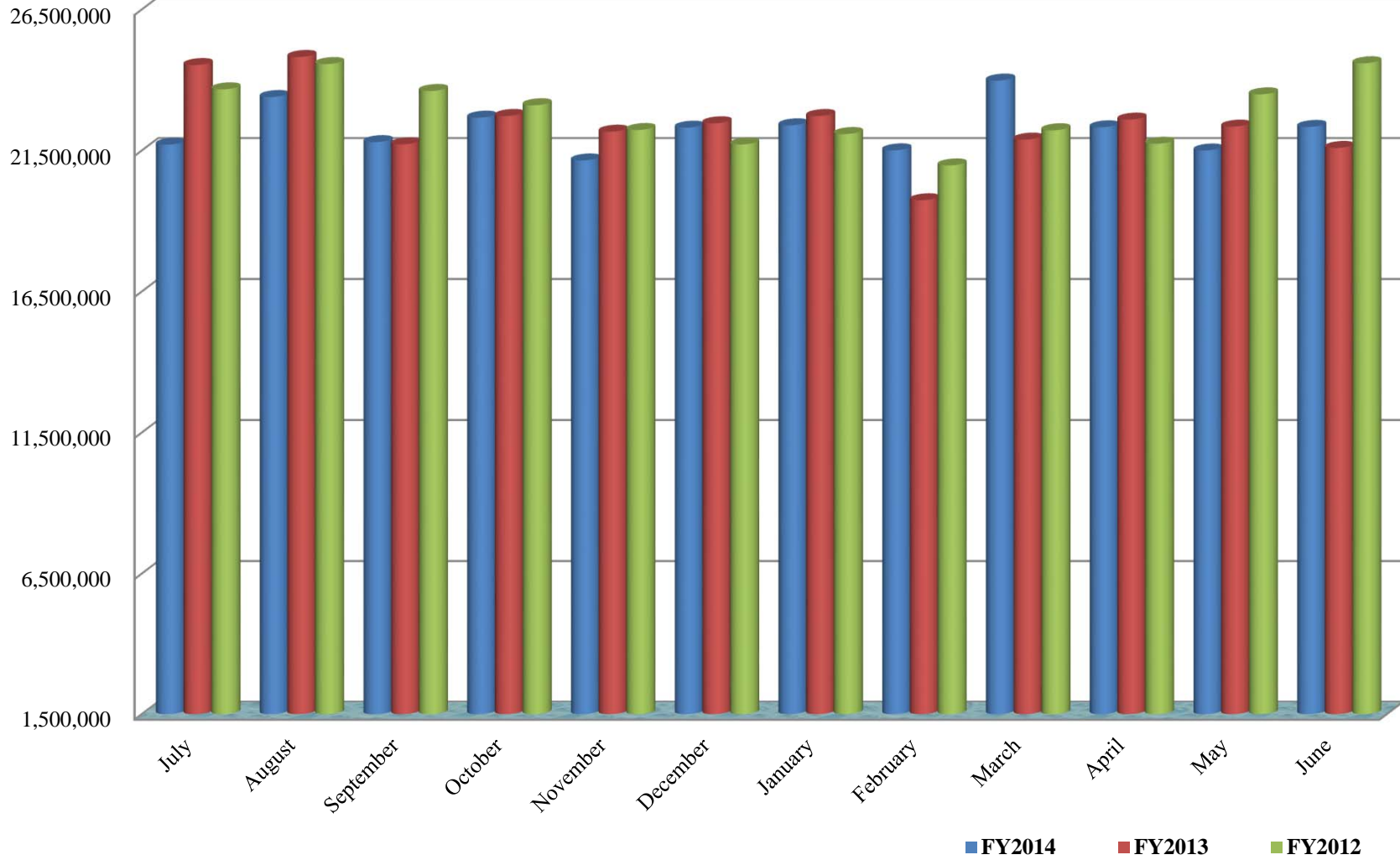
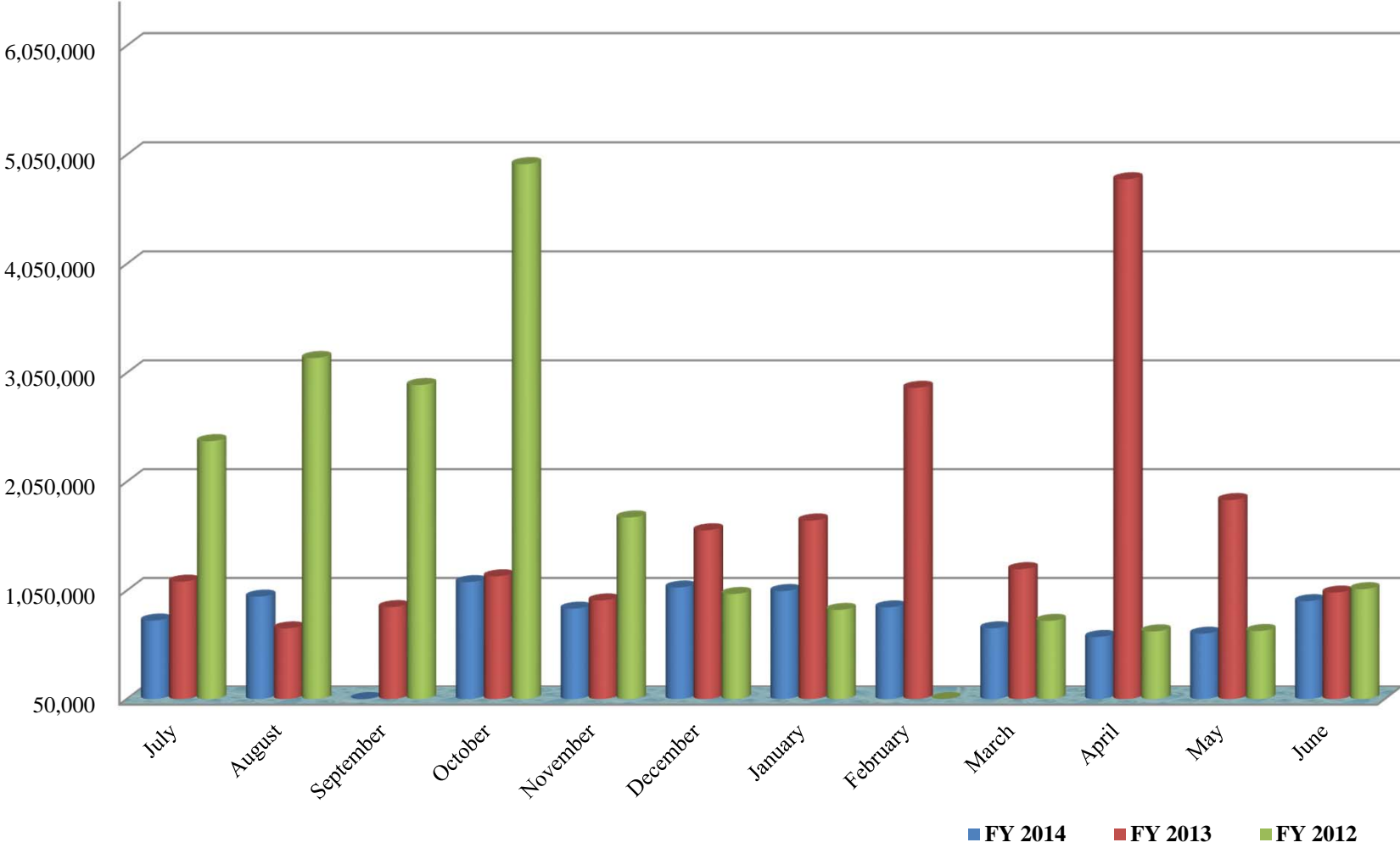


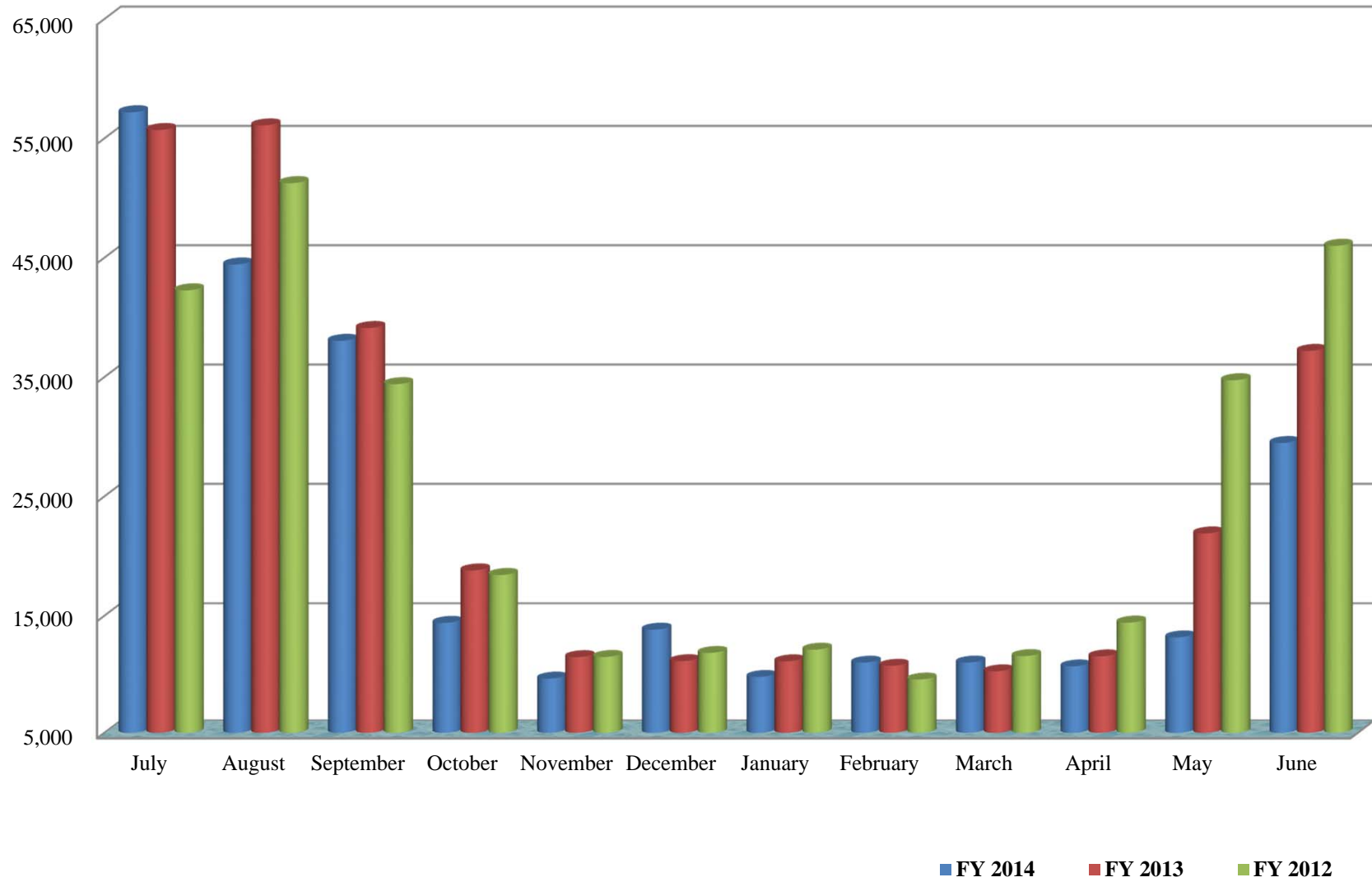
Influent



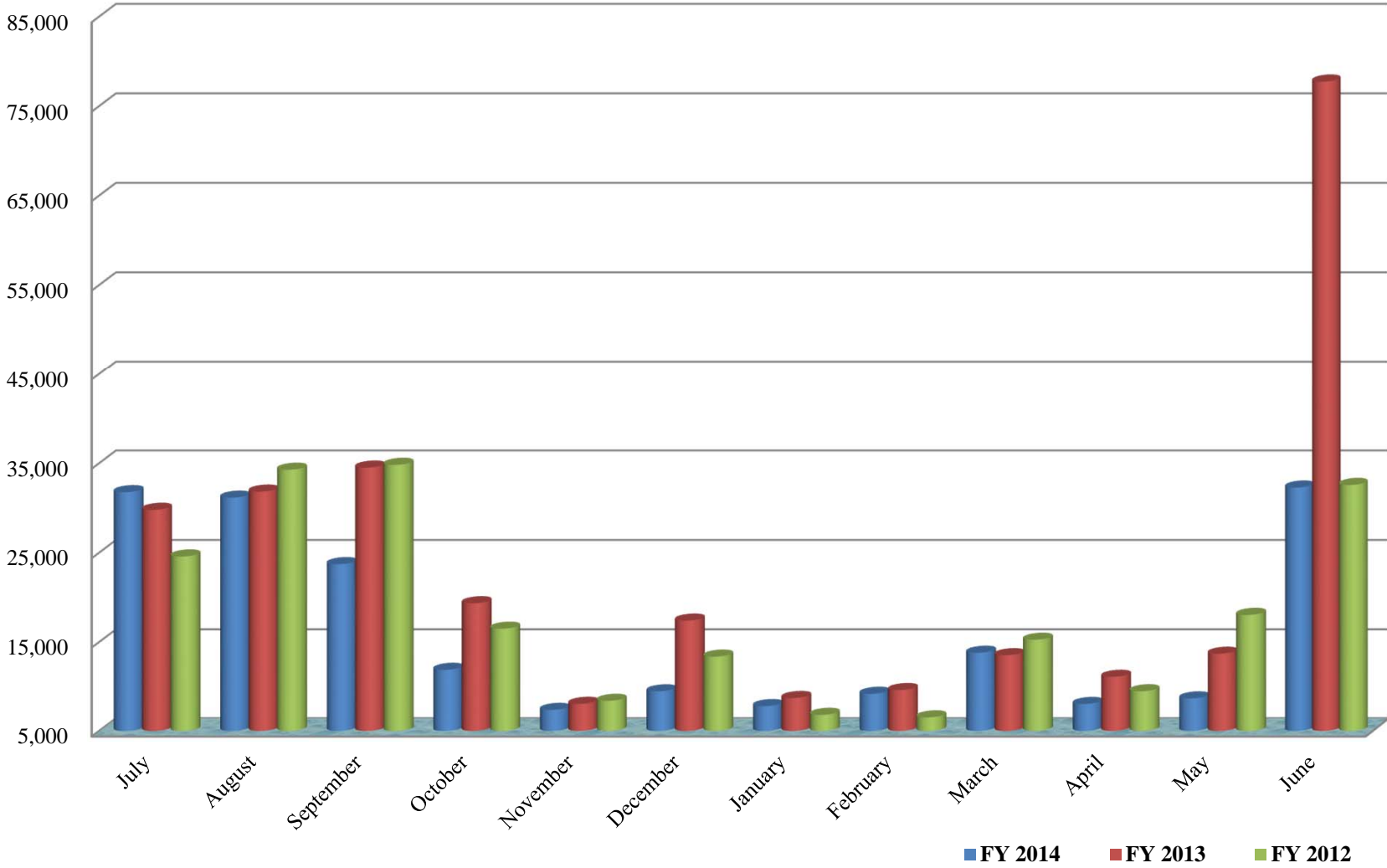
Bulk Water Usage



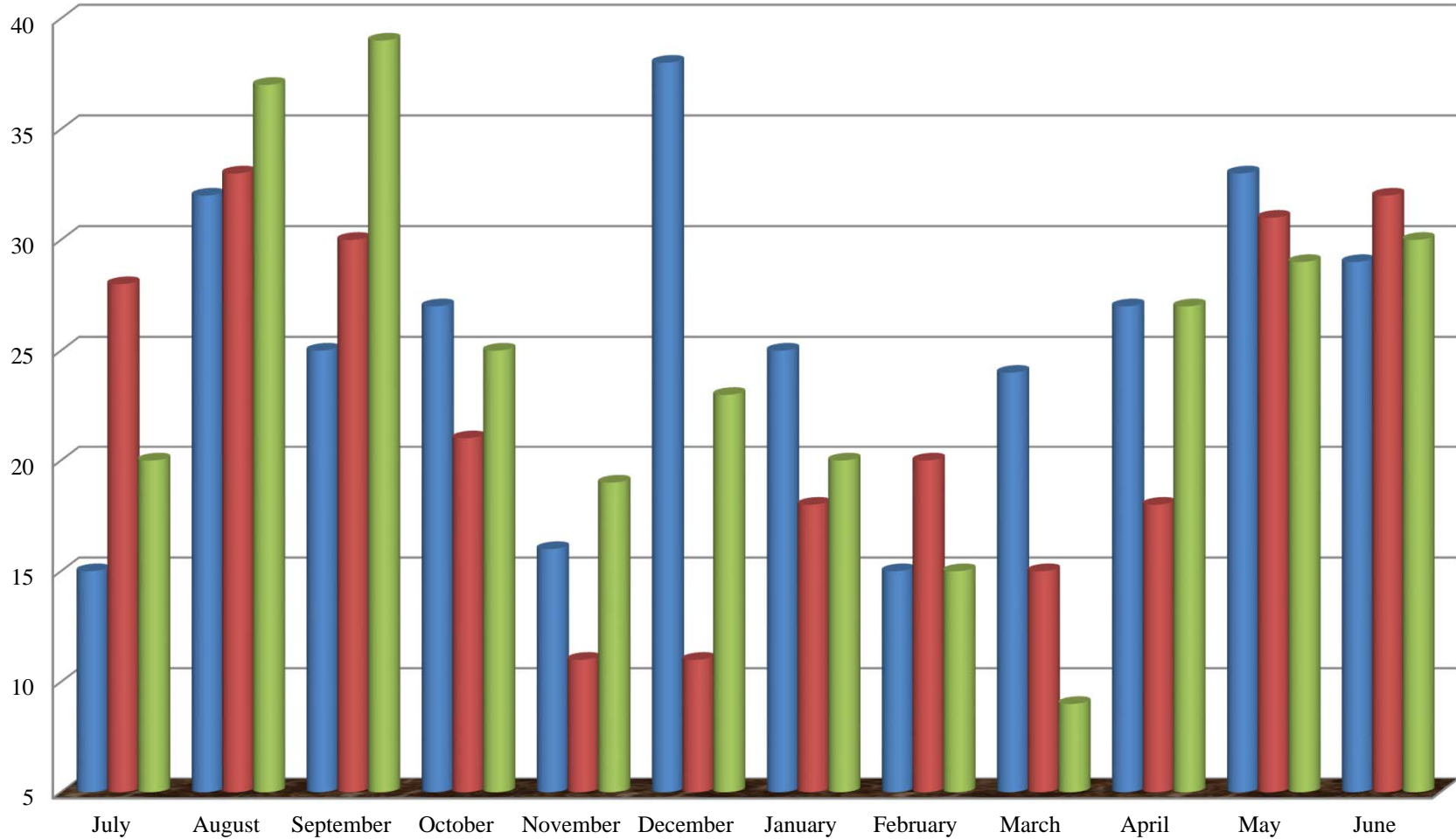
Residential Water Usage



Commercial Water Usage



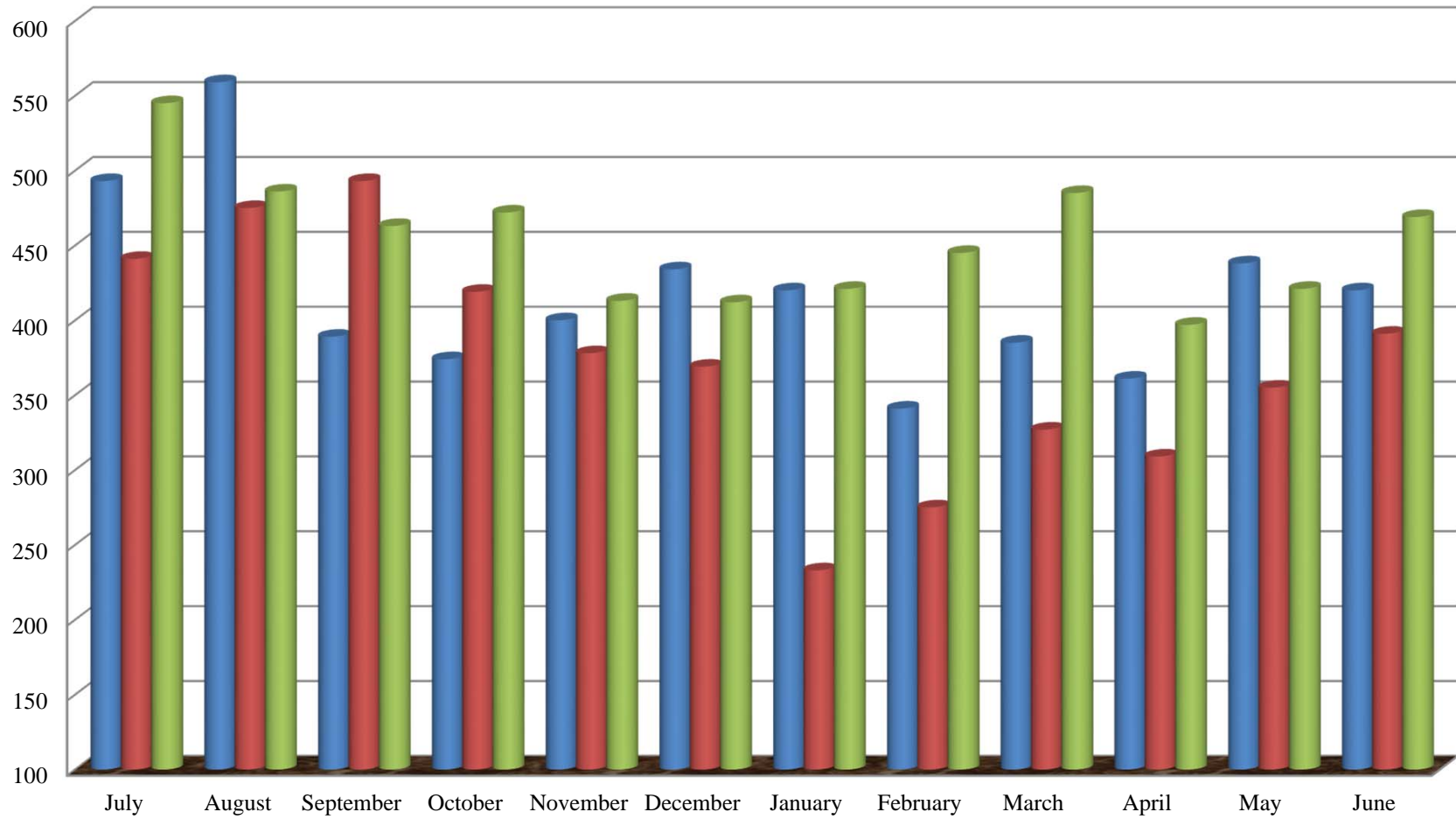
Type 1 Violations



Includes: Larceny, Burglary, Assault, Murder, Rape, Arson, Motor Vehicle Theft

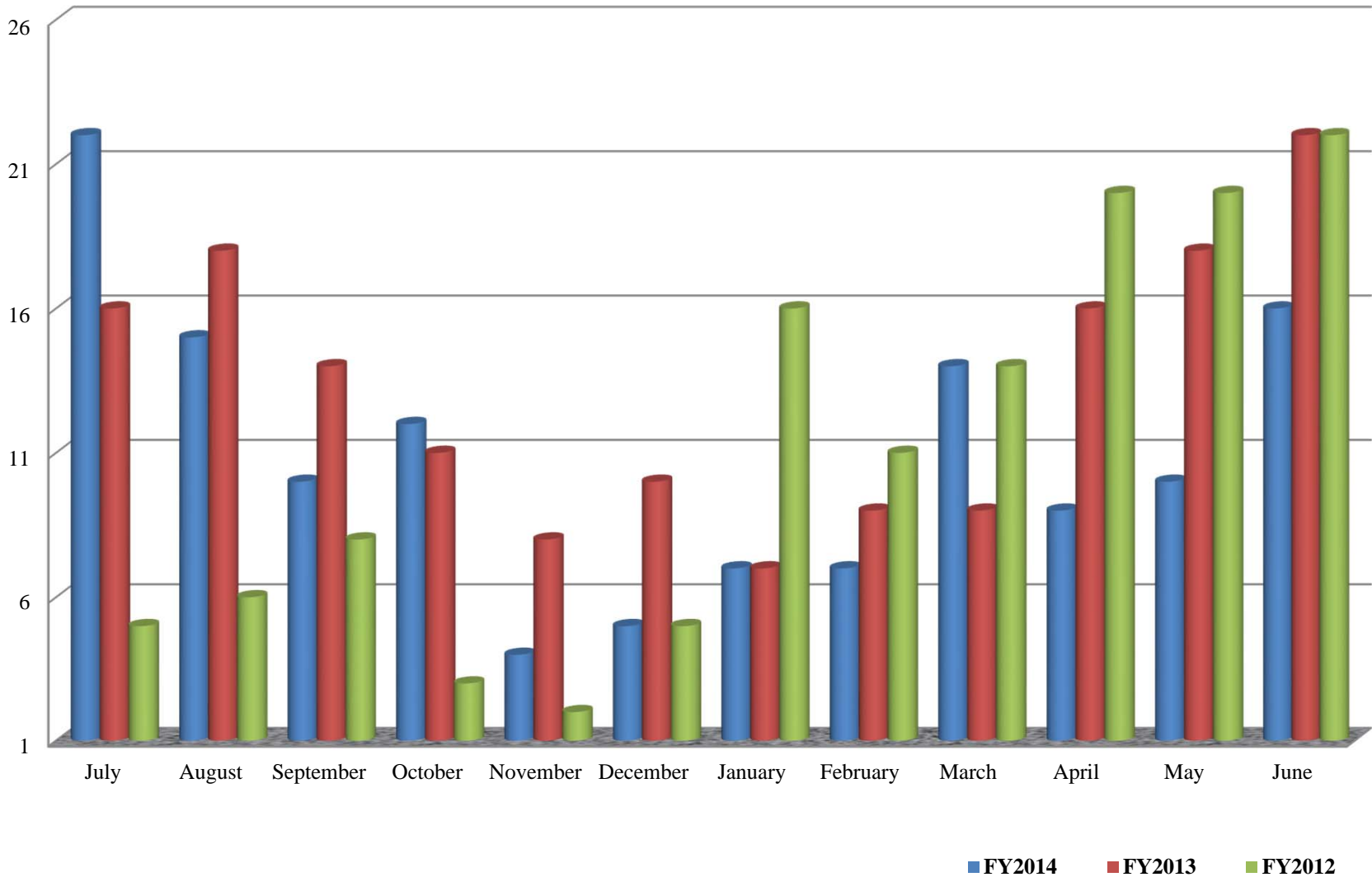
■ FY2014 ■ FY2013 ■ FY2012

Type 2 Violations



FY2014 FY2013 FY2012

Residential Building Permits



Commercial Building Permits

